

# JMB-C+

## HOT WATER HIGH PRESSURE CLEANER ON TRAILER

Autonomous hot water high pressure cleaner, available as single-axle or double-axle trailer, built-in and skid-configuration.

It's built according to DiBO's high quality standards. The trailer version is equipped with acoustic damping material. This makes the JMB-C+ a high pressure clean trailer that prevents noise and therefore can be used anywhere. Suitable for many different cleaning jobs such as daily heavy duty cleaning in many different branches of the cleaning industry, shipping, agriculture, facade cleaning sector.

The JMB-C+ is also a perfect solution for custom-built designs.



85 kW and 110 kW

- GreenBoiler for a greater efficiency >92%
- 18% fuel saving
- Low CO<sub>2</sub> emission
- Low maintenance cost



110 kW GreenBoiler  
+ 20 kW Intercooling

130 kW HEATING POWER

HORIZONTAL stainless steel  
water and fuel tank

### STANDARD ACCESSORIES :



Integrated high and low pressure hose reels with 50 m 3/8" high pressure hose and 50 m 3/4" low pressure hose



Single stainless steel lance with high pressure nozzle and rotating quick coupling  
code : 1.216.729.xxxxx (≤ 250 bar)  
code : 1.216.749.xxxxx (> 250 bar and ≤ 250 bar)  
code : 1.216.769.xxxxx (>350 bar and ≤ 500 bar)



High pressure gun with swivel  
code : 1.211.5xx



All engines comply with the latest emission standard

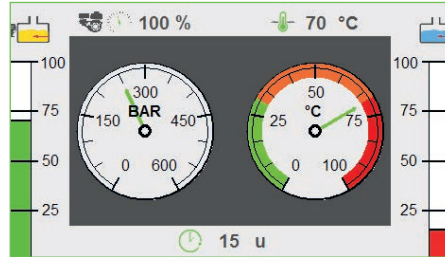
# JMB-C+

## Operating panel with digital display and joystick



Electronic setting of the temperature (exact & constant).

Electronic control with pressure gauge, hour counter, maintenance information, error messages and device functions that facilitate maintenance.



The digital display indicates continuously the status of the machine and instructs exactly what to do when there's a malfunction. With level indicator of the fuel and water tank on the display and alarm.



Everything visible at a glance. Easy to adjust with a handy joystick and to operate with gloves.



DiBO JMB-H 500/15

## TECHNICAL SPECIFICATIONS :

- Industrial 2 ,3 or 4-cylinder diesel engine with preheating of the water in the tank via heat exchanger. This saves up 15 % fuel for the burner
- Motor control system with electronic control
- Radial high pressure pump with 3 ceramic plungers and stainless steel valves
- Boiler with independent motor fitted and fuel valve with electronic ignition
- 12 V operating voltage
- With security: level indicator of the fuel and water tank on the display with alarm
- Pressure relief up to <25 bar with sealed gun
- Electronic pressure and flow adjustment
- Auto-stop system stops the engine after 30 min. without spraying activity
- Automatic speed regulation, idling after 30s
- Stainless steel water tank (400 l or 620 l- not on built-in and skid-configuration)
- Stainless steel fuel tank 104 l (not on built-in configuration)
- Trailer version: galvanized single- or double-axle trailer fitted with swivel wheel and brake
- Automatic pre-glowing



MODELS :

JMB-C+												
TYPE	bar	l/h	°C	kW	kW	l	l	mm	kg			
	Adjustable											
1.133.360	200/18 TG	up to 200	1080	30 - 110	11,7 (Diesel)	110	104	400	3285 x 1535 x 2240	870	055	■
1.133.350	200/18 I	200	1080	30 - 110	11,7 (Diesel)	110	-	-	1050 x 1020 x 960	370	055	■
1.133.355	200/18 S	200	1080	30 - 110	11,7 (Diesel)	110	104	-	1780 x 1300 x 1060	660	055	■
1.133.365	200/18 TG2	200	1080	30 - 110	11,7 (Diesel)	110	104	620	3285 x 1535 x 2240	1050	055	■
1.133.460	200/30 TG	200	1800	30 - 110	18,0 (Diesel)	110	104	400	3285 x 1535 x 2240	870	090	■
1.133.450	200/30 I	200	1800	30 - 110	18,0 (Diesel)	110	-	-	1050 x 1020 x 960	370	090	■
1.133.455	200/30 S	200	1800	30 - 110	18,0 (Diesel)	110	104	-	1780 x 1300 x 1060	670	090	■
1.133.465	200/30 TG2	200	1800	30 - 110	18,0 (Diesel)	110	104	620	3285 x 1535 x 2240	1050	090	■
1.133.660	350/18 TG	350	1080	30 - 110	18,0 (Diesel)	110	104	400	3285 x 1535 x 2240	870	040	■
1.133.650	350/18 I	350	1080	30 - 110	18,0 (Diesel)	110	-	-	1050 x 1020 x 960	370	040	■
1.133.655	350/18 S	350	1080	30 - 110	18,0 (Diesel)	110	104	-	1780 x 1300 x 1060	670	040	■
1.133.665	350/18 TG2	350	1080	30 - 110	18,0 (Diesel)	110	104	620	3285 x 1535 x 2240	1050	040	■
1.133.835	500/15 TG	500	900	30 - 110	18,9 (Diesel)	110	104	400	3285 x 1535 x 2240	890	030	□
1.133.825	500/15 I	500	900	30 - 110	18,9 (Diesel)	110	-	-	1050 x 1020 x 960	390	030	□
1.133.830	500/15 S	500	900	30 - 110	18,9 (Diesel)	110	104	-	1780 x 1300 x 1060	690	030	□
1.133.840	500/15 TG2	500	900	30 - 110	18,9 (Diesel)	110	104	620	3285 x 1535 x 2240	1070	030	□

TG = Braked trailer, I = Built-in configuration, S= Skid-configuration, TG2 = Double-axle braked trailer

## OPTIONAL ACCESSORIES :



1.232.021  
Basic remote control with  
hose reel and 50 m electric  
cable



1.232.020  
Wireless remote control

1.232.035  
extra 3th hose reel  
(without hose)



## JMB-C+



1.232.030	Stainless steel fuel tank (104 l) for built-in configuration
1.232.021	Remote control
1.232.020	Wireless remote control
1.232.035	Extra 3rd hose reel (without hose)
1.232.050	Anti-scaling system by dosing pump on flow
1.232.150	Track & Trace system, including information on <ul style="list-style-type: none"> <li>- Working hours burner &amp; machine</li> <li>- Errors visible from a distance</li> <li>- Location of the machine</li> <li>- Location history</li> <li>- Error messages history</li> </ul>
1.890.000	Yearly subscription for the activation of the Track & Trace option (1.232.150)